

# Deep learning based diagnosis of COVID-19 using chest CT-scan images

Talha Anwar <sup>1</sup> and Seemab Zakir <sup>2</sup>

<sup>1</sup>National University of Computer and Emerging Sciences

<sup>2</sup>Affiliation not available

October 30, 2023

## Abstract

The Coronavirus disease (COVID-19) is an infectious disease that primarily affects lungs. This virus has spread in almost every continent. Countries are racing to slow down the spread by testing and treating patients. To diagnose the infected people, reverse transcription-polymerase chain reaction (RT-PCR) test is used. Because of colossal demand; PCR kits are under shortage, and to overcome this; radiographic techniques such as X-rays and CT-scan can be used for diagnostic purpose. In this paper, deep learning technology is used to diagnose COVID-19 in subjects through chest CT-scan. EfficientNet deep learning architecture is used for timely and accurate detection of coronavirus with an accuracy 0.897, F1 score 0.896, and AUC 0.895. Three different learning rate strategies are used, such as reducing the learning rate when model performance stops increasing (reduce on plateau), cyclic learning rate, and constant learning rate. Reduce on plateau strategy achieved F1-score of 0.9, cyclic learning rate and constant learning rate resulted in F1-score of 0.86 and 0.82, respectively. Implementation is available at [github.com/talhaanwarch/Corona\\\_Virus/tree/master/CT\\\_scan](https://github.com/talhaanwarch/Corona\_Virus/tree/master/CT\_scan)

# Deep learning based diagnosis of COVID-19 using chest CT-scan images

1<sup>st</sup> Talha Anwar

Department of Computer Science  
National University of Computer and Emerging Sciences  
Islamabad, Pakistan  
chtalhaanwar@gmail.com

2<sup>nd</sup> Seemab Zakir

Department of Biomedical Engineering  
Riphah International University  
Islamabad, Pakistan  
seemabzakir2@gmail.com

**Abstract**—The Coronavirus disease (COVID-19) is an infectious disease that primarily affects lungs. This virus has spread in almost every continent. Countries are racing to slow down the spread by testing and treating patients. To diagnose the infected people, reverse transcription-polymerase chain reaction (RT-PCR) test is used. Because of colossal demand; PCR kits are under shortage, and to overcome this; radiographic techniques such as X-rays and CT-scan can be used for diagnostic purpose. In this paper, deep learning technology is used to diagnose COVID-19 in subjects through chest CT-scan. EfficientNet deep learning architecture is used for timely and accurate detection of coronavirus with an accuracy 0.897, F1 score 0.896, and AUC 0.895. Three different learning rate strategies are used, such as reducing the learning rate when model performance stops increasing (reduce on plateau), cyclic learning rate, and constant learning rate. Reduce on plateau strategy achieved F1-score of 0.9, cyclic learning rate and constant learning rate resulted in F1-score of 0.86 and 0.82, respectively. Implementation is available at [github.com/talhaanwar/Corona\\_Virus/tree/master/CT\\_scan](https://github.com/talhaanwar/Corona_Virus/tree/master/CT_scan)

**Index Terms**—COVID-19, deep learning, classification, CT scan

## I. INTRODUCTION

SARS-CoV-2 pandemic has affected millions of people worldwide. To date, several million people have gone to the valley of death and many more are getting affected by it on a daily bases. Hundreds of subjects don't get diagnosed with COVID-19 at their early stage due to the shortage of testing equipment. When these undiagnosed early staged subjects with no physical symptoms come in contact with the healthy individuals, they transfer the virus to healthy people and this chain continues. The current approach to test COVID-19 is by using reverse transcription-polymerase chain reaction (RT-PCR). Patient's specimen is collected through subject's nose or throat and then sent to the laboratories for diagnostic purpose. This process is time consuming and due to its huge demand, there is a shortage of these kits. Round the globe, researchers are trying to find alternative techniques to diagnose coronavirus in affected people. Radiological equipment such as X-ray and CT-scan came up as potential alternatives for COVID-19 diagnosis.

In this paper, only CT-scan scope is discussed. J Zhao *et al.* [1]. collected the CT-scan images both for COVID and non-COVID subjects and X. He *et al.* [2] used self-

supervised learning along with transfer learning to achieve an F1-score of 0.85. S. Wang [3] trained the deep learning model on CT-scan images and resulted in an F1-score of 0.63. M. Polsinelli proposed a light convolution neural network for medium specs system to diagnose COVID-19 from chest CT-scans. An accuracy, recall precision and F1-score of 0.83 and 0.85, 0.817, 0.83 respectively was achieved by light CNN [4]. A. Amyar achieved 0.86 accuracy and 0.93 AUC score while classifying COVID CT-scan images [5]. In this work, we used EfficientNet architecture and performed 5 fold cross-validation strategy to predict the test data in each fold. The test predictions of each fold are averaged and evaluated against the ground truth. The paper is organized as follows. Section 2 presents details of the dataset used and the methodology for the classification. Section 3 deals with the results in detail. Section 4 concludes the paper and presents some ideas for future work.

## II. METHODOLOGY

### A. Dataset

Dataset comprises of 349 CT scan images collected from 216 COVID patients and 396 non-COVID patients. [1]. Training data consists of 253 COVID images and 291 non-COVID images whereas test set comprises of 98 COVID and 105 non-COVID CT-scan images. As the dataset is limited, no separate validation-dataset is used in this study. Instead 5 fold cross validation strategy is applied such that test data is predicted in each fold. After training; test predictions of each fold are averaged and evaluated against the ground truth.

As small dataset for training may lead to over-fitting, so dataset is augmented to increase the number of images, along with transfer learning. Transfer learning can be domain specific such as training on other CT-scan image dataset or domain generic such as training on very large image dataset containing millions of images and hundreds of classes such as Imagenet dataset [6]. In this approach, domain generic transfer learning is used, because to date no other COVID CT-scan dataset is available publicly. We don't want to train on healthy CT-scan images to avoid pre-learning on normal CT-scan images which may lead to weight shifting towards the normal class. For data augmentation, different transformation techniques are used to synthesize data such as:

- Flip: Images are flipped horizontally and vertically.
- Rotate: Images are rotated by an angle
- Shift: Images are shifted left, right, upward and downward

After transformation, these images are considered as separate images. Only flipping is performed in this study as it yields more better results. Rotation mostly works better in circular images, and shifting may result in loss of some information.

TABLE I  
NUMBER OF IMAGES IN TRAINING AND TESTING DATASET

	COVID	Non-COVID	Flipping	Total
<b>Train</b>	253	291	x2	1088
<b>Test</b>	98	105	x2	406
<b>Total</b>	351	396		1494

Table I shows the image distribution in training and testing set. After horizontal and vertical flipping there are 1088 images for training, among 544 are original images and 544 augmented images. Similarly, flipping results in 203 more test images.

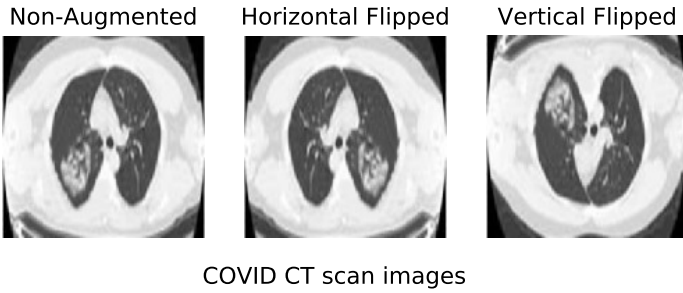


Fig. 1. Non-Augmented, horizontally and vertically flipped augmented COVID CT-scan images

Figure 1 shows original non augmented and augmented COVID chest CT-scan images.

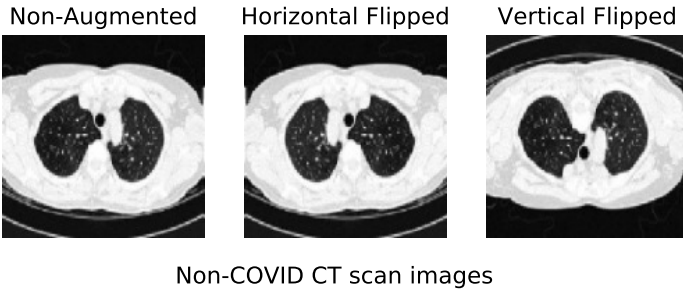


Fig. 2. Non-Augmented, horizontally and vertically flipped augmented COVID CT-scan images

Figure 2 shows original non augmented and augmented non-COVID images of chest Ct-scan.

### B. Deep learning architecture

EfficientNet family of deep learning architecture is known for their smaller number of parameters and nearly state of

the art performance on ImageNet benchmark dataset [8]. EfficientNet B4 is used as deep learning architecture for this study. This model has only 19 million parameters and it surpassed the other models having 7 times more parameters such as SENet with 146 million parameters, on ImageNet benchmark.

### C. Learning Rate

Learning rate plays an important role in model convergence leading to better performance. We tried a fixed learning rate of 0.0001. Apart from the fixed learning rate, cyclic learning rate [7] and learning rate reduced on plateau strategy was also used. In cyclic learning rate, model learning rate cycles between an upper and lower bound while training. We used triangular2 strategy, in which learning rate becomes half of the previous triangle, as shown in figure 3. While in reduce on plateau, model learning rate decreases when model performance stops improving. This helps to take small steps when the model is near convergence. Cyclic learning rate is independent of validation data, while reduce on plateau considers model performance on validation data by decreasing the learning rate, as shown in figure 4.

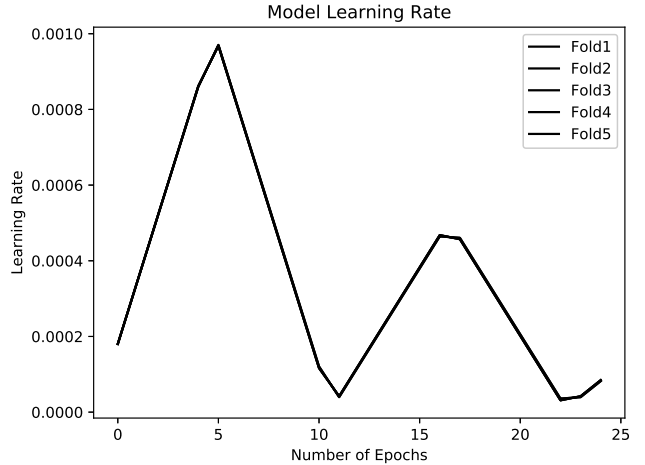


Fig. 3. Cyclic learning rate triangular2 policy for 5 fold cross validation

### D. Loss Function

To minimize the error; instead of binary cross-entropy, focal loss function [9] is used. Focal loss function puts less weights for the easily classified examples and gives more importance to hard examples thus increasing the probability of correct predictions for difficult examples.

### E. Evaluation Criteria

We used accuracy, precision, recall, F1 score and AUC score as the evaluation criteria. Accuracy is the total number of correct predictions out of all predictions. Recall depicts out of total actual coronavirus cases; how many are identified as coronavirus affected. Precision is out of total subjects

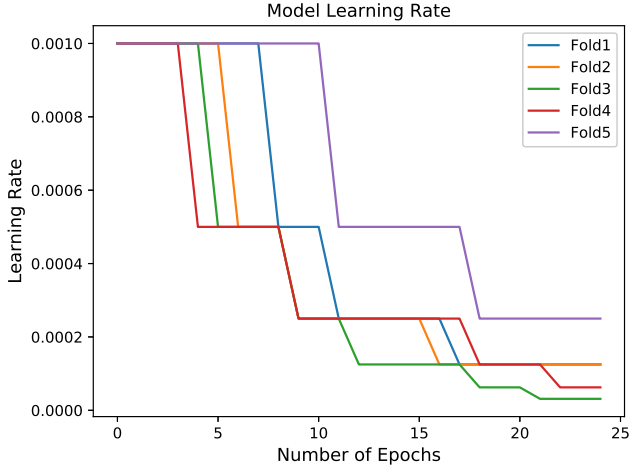


Fig. 4. Reduce on plateau learning rate for 5 fold cross validation

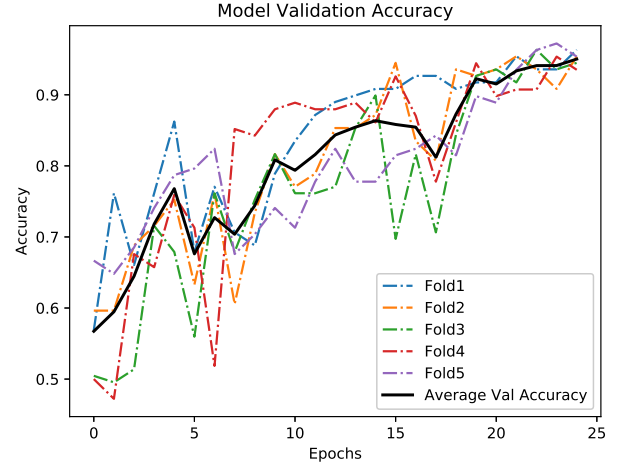


Fig. 6. Validation accuracy of model using cyclic learning rate

predicted as corona virus cases; how many actually are affected by coronavirus. F1 score is harmonic mean between precision and recall. AUC is the area under the ROC curve and it provides an aggregate measure of performance across all possible classification thresholds.

### III. RESULTS

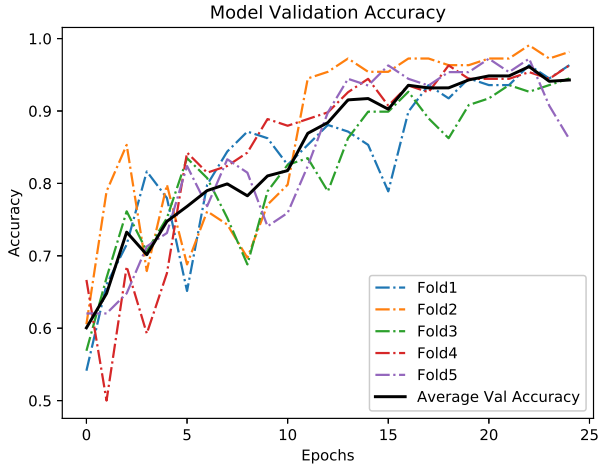


Fig. 5. Validation accuracy of model using reduce on plateau learning rate strategy

Figure 5 shows 5 fold validation accuracy and average validation accuracy while using reduce on plateau strategy of learning rate. The 5 fold cross-validation accuracies are nearly stable because learning rate is reduced based on each fold validation loss; leading closer to global minima for that fold.

Figure 6 shows that cyclic learning rate 5 fold cross-validation accuracies are more volatile than the plateau reducing learning rate, because cyclic learning rate is independent of validation split. In each fold, the learning rate cycles with

out considering the validation data of that fold as shown in figure 3.

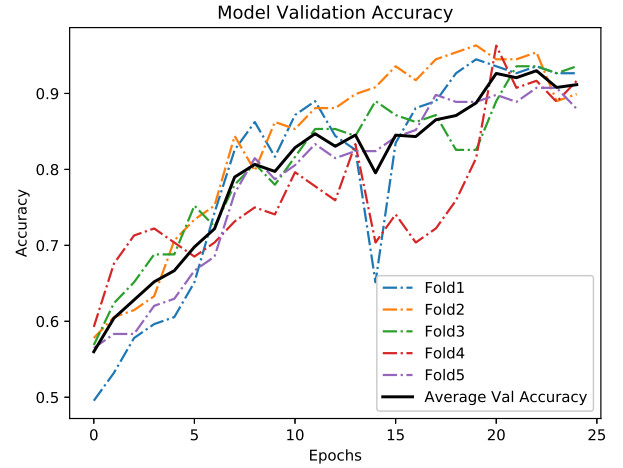


Fig. 7. Validation accuracy of model using constant learning rate

Figure 7 shows that validation accuracy when model is trained with fixed learning rate. The validation accuracies are stable during initial epochs and then become unstable in later epochs in some folds.

Figure 8 and figure 9 shows that plateau based learning rate strategy achieved better results because the learning rate is reduced when validation performance stops improving, making the model to take smaller learning steps. Though the constant learning rate did not have fluctuations in the beginning as compared to plateau based learning rate and cyclic learning rate, but it converged less as compared to plateau based learning rate strategy. Cyclic learning rate showed some sharp peaks in validation accuracy.

Table II shows precision, recall and F1-score for COVID and non-COVID classes separately. The highest precision of

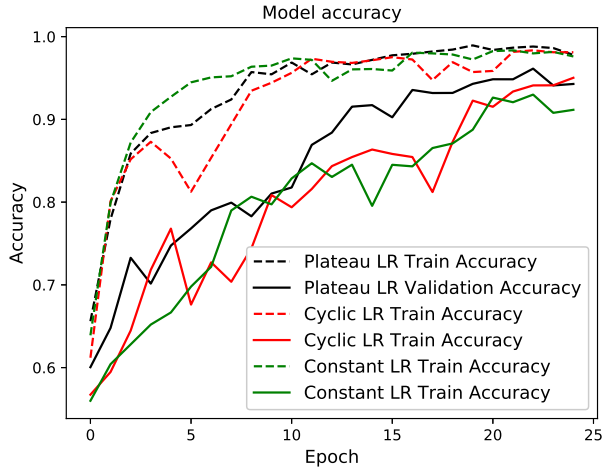


Fig. 8. Comparison of average training accuracy and validation accuracy

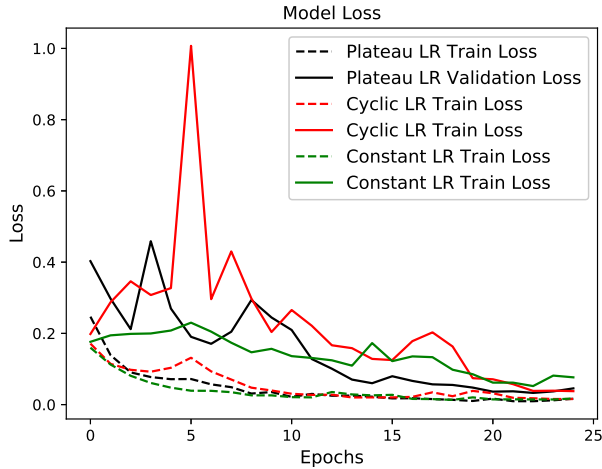


Fig. 9. Comparison of average training loss and validation loss

TABLE II  
CLASSIFICATION PERFORMANCE COMPARISON ON TEST DATA BASED ON  
INDIVIDUAL CLASSES

LR Methodology	Classes	Precision	Recall	F1 Score
Plateau LR	COVID	0.94	0.84	0.89
	Non-COVID	0.86	0.95	<b>0.90</b>
Cyclic LR	COVID	<b>0.97</b>	0.73	0.84
	Non-COVID	0.80	<b>0.98</b>	0.88
Constant LR	COVID	0.94	0.68	0.79
	Non-COVID	0.77	0.96	0.85

TABLE III  
MODEL PERFORMANCE ON TEST DATA USING DIFFERENT LEARNING RATE  
STRATEGIES

	Plateau LR	Cyclic LR	Constant LR
Macro Average Precision	0.90	0.89	0.85
Macro Average Recall	0.89	0.86	0.82
Macro Average F1 Score	0.90	0.86	0.82
Accuracy	0.90	0.86	0.86
AUC score	0.90	0.86	0.82

0.97 in COVID class is obtained using cyclic learning rate strategy, while in non-COVID class 0.94 precision is obtained using reduce on plateau strategy. Highest recall in COVID class is 0.84; obtained by reduce on plateau strategy, whereas in non-COVID it is 0.98 by cyclic learning rate.

Table III shows accuracy, precision, recall, F1 score and AUC score for the model trained on three different learning rate strategies i.e reduce on plateau, cyclic learning rate and constant learning rate. The best performance on test set is achieved by reduce on plateau strategy, resulting in 0.897, 0.896, 0.895 accuracy, F1 score and AUC score respectively. Though the cyclic learning rate, did not look much promising in validation graphs, achieved an accuracy, F1 score and AUC value of 0.86,0.86,0.86 respectively. Constant learning rate strategy performed worst on test dataset and an accuracy, F1 score and AUC value of 0.83,0.82,0.82 is achieved respectively.

#### IV. CONCLUSION

This paper used EfficientNet b4 to discriminate between COVID CT-scan images and normal CT-scan images. Different learning rate policies are studied, such as reduce on plateau, cyclic learning rate and constant learning rate. Instead of using binary cross-entropy, focal loss is used to tackle hard examples. Previous studies claimed highest accuracy of 0.86 and F1-score of 0.85 using this dataset. Our results with 0.90 F1 score and accuracy on the same dataset are significantly better. Future work includes training the model on the same dataset used in this paper and test on some other collected dataset.

#### REFERENCES

- [1] J. Zhao, Y. Zhang, X. He, and P. Xie, "COVID-CT-Dataset: A CT scan dataset about COVID-19," arXiv preprint arXiv:2003.13865,2020.
- [2] X. He, X. Yang, S. Zhang, J. Zhao, Y. Zhang, E. Xing, and P. Xie. "Sample-Efficient Deep Learning for COVID-19 Diagnosis Based on CT Scans", medRxiv preprint doi: <https://doi.org/10.1101/2020.04.16.20064709>
- [3] S. Wang, B. Kang, J. Ma, X. Zeng, M. Xiao, J. Guo, M. Cai, J. Yang, Y. Li, X. Meng and B. Xu "A deep learning algorithm using CT images to screen for Corona Virus Disease (COVID-19)", medRxiv preprint doi: <https://doi.org/10.1101/2020.02.14.20023028>.
- [4] M. Polcinelli, L. Cinque and G. Placidi. "A Light CNN for detecting COVID-19 from CT scans of the chest", arXiv preprint arXiv:2004.12837,2020.
- [5] A. Amyar, R. Modzelewski, S. Ruan. "Multi-task Deep Learning Based CT Imaging Analysis For COVID-19: Classification and Segmentation", arXiv preprint arXiv:2003.13865,2020.
- [6] J. Deng, W. Dong, R. Socher, L. Li, Kai Li and Li Fei-Fei. "ImageNet: A large-scale hierarchical image database," 2009 IEEE Conference on Computer Vision and Pattern Recognition, Miami, FL, 2009, pp. 248-255, doi: 10.1109/CVPR.2009.5206848.

- [7] L. N. Smith, "Cyclical Learning Rates for Training Neural Networks," 2017 IEEE Winter Conference on Applications of Computer Vision (WACV), Santa Rosa, CA, 2017, pp. 464-472, doi: 10.1109/WACV.2017.58.
- [8] M. Tan and Q. V. Le, "Efficientnet: Rethinking model scaling for convolutional neural networks," in The International Conference on Machine Learning (ICML), 2019.
- [9] T. Lin, P. Goyal, R. B. Girshick, K. He, and P. Dollar. Focal loss for dense object detection. IEEE ICCV, 2017.